

université
PARIS-SACLAY

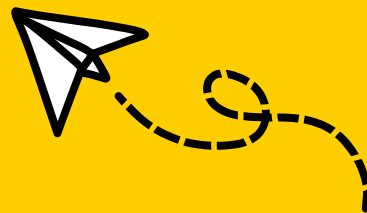


CONTACT US

Representatives of the non-permanent members are elected each year. Their names are updated on the ESE website:

<https://www.esse.universite-paris-saclay.fr/>

Ask them to add you to the **WhatsApp group** and mailing list so you don't miss any events!



**HELP FOR
NON-FRENCH SPEAKERS**

RECREATION AT THE IDEEV

LIFE ON THE CAMPUS

ISSUE 2022

ACTIVITIES



There are many things to discover on campus!

Cesfo: www.cesfo.universite-paris-saclay.fr

Orsay swimming pool: stadenautique.mairie-orsay.fr

Lumen Learning Center: millions of books, journals and articles available to everyone! It includes several spaces: collections, auditorium, exhibitions, creation, work... as well as a brewery, a patio and terraces!

You can also find all **the events of the University Paris-Saclay** on this page:

<https://www.universite-paris-saclay.fr/evenements>

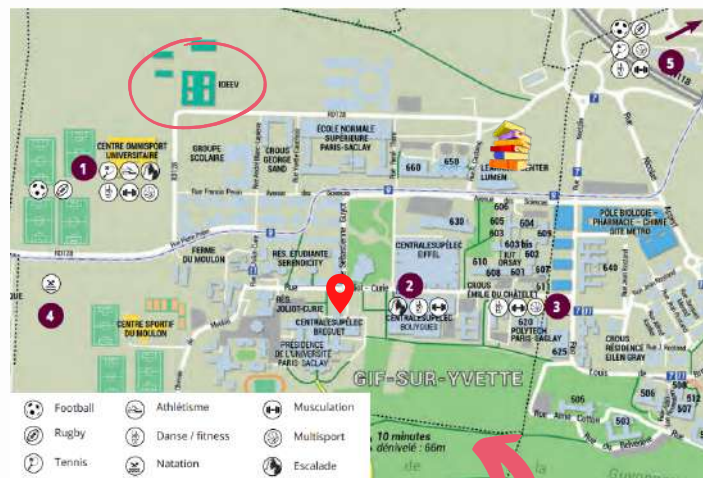
And don't forget to subscribe to the bi-monthly newsletter "**La Diagonale**" if you haven't already done so!

<https://www.universite-paris-saclay.fr/la-diagonale>

WITH THE LAB



Don't hesitate to ask your colleagues to organize or participate in recreational, sports or cultural events... or just to have a drink!



ON THE PLATEAU

You have access to **sports complexes on campus** and elsewhere. All these activities can be found at: www.sports.universite-paris-saclay.fr

But also: supermarket, pharmacy, bank, bakery, optician, dentist, parks and gardens, etc.



FOR NON-FRENCH SPEAKERS

To register for French courses, participate in events or get help with administrative procedures, you can contact :

- **Science Accueil:**
 - o Mail: contact@science-accueil.org
 - o Phone: +33(0)1 70 26 41 40
 - o Website: <https://www.science-accueil.org/>
- **Le GATE Paris-Saclay:**
 - o Opening hours: Monday to Friday (9am-1pm) by appointment
 - o Address: 3 rue Joliot Curie (Bâtiment Bréguet)
 - o Mail: contact@gateparissaclay.fr
 - o Website: <https://gate.paris-saclay.fr/>
 - o Take appointment : <https://gate.paris-saclay.fr/partenaires-et-rdv/>

TO KNOW



REDUCED RATES

For people under 26, most Parisian museums, monuments and castles are free!

For people under 28, reduced rates and €10 tickets for the operas and the Paris orchestra.

Possibility of a young person's card for the TER/TCV.

FÊTE DE LA SCIENCE

This event takes place **every year in the fall and allows to share and discover science** to as many people as possible, whatever their age, their level or their curiosity!

On this occasion, you can **propose animations, alone or with others**. If you are a thesis student, this can count as training hours!

INTERNAL

Ask the non-permanent representatives to add you to the Whatsapp groups:

- *ESE non permanents !*
- *ESE recreational events*
- *IDEEV sport activities*

