



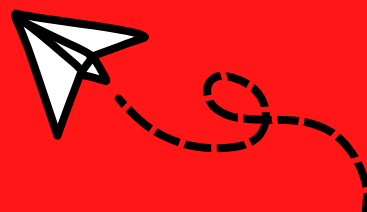
## CONTACT US

---

For all questions related to security, please contact the security officers

The list is regularly updated and available on the ESE website:

<https://www.ese.universite-paris-saclay.fr/organigramme/>



## LOCAL SECURITY

SOME GENERAL GUIDELINES AND INSTRUCTIONS

**SECURITY**

ISSUE 2022



# ESE LOCAL MAP

Welcome to the IDEEV in the ESE laboratory!

For optimal security, be sure to walk around the premises upon your arrival to locate all security elements! You can ask any questions you may have to the safety officers. Their names are listed on the ESE website.

## SECURITY ELEMENTS

### EMERGENCY STAIRS

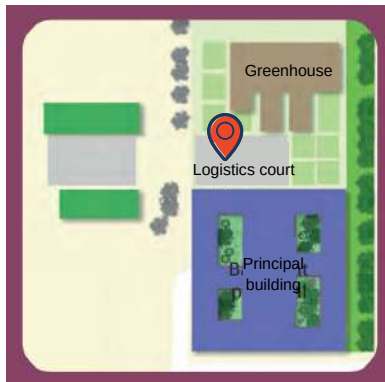
In case of evacuation, close windows, **GET OUT** and **DO NOT use elevators. Do not lock the doors!**

There are **4 fire escapes on each wing of the building** in addition to the usual stairways. Join everyone at the assembly point!

The doors leading to the emergency stairs are marked with this logo:



The assembly point is the "logistic yard" which is located at the North of the IDEEV (red dot on the right)



This button opens the emergency stairwell doors. **Only use them in case of emergency and not for everyday use!**



### FIRE EXTINGUISHERS!

You can find them easily in the corridors, they are numerous. You will see two types: B and/or AB. The **B** is a **CO2** extinguisher, so no water! It is specific to **electrical fires**.

The **AB** is composed of **both water and an additive** and is **recommended for material fires**, i.e. for any object catching fire.

Of course, in case of an electrical fire, if the B extinguisher is not enough, you can use the AB (the additive is added to prevent the risk of electrocution). Here are the cards and the picture of the extinguishers below.

Note: The fire extinguishers are **distributed in the corridors according to the risks present**. The B's are close to the electrical panels for example.



Fires, gas or hydrogen leaks, chemical spills... In case of a risky situation, **the most important thing is to stay calm!**

Members of the lab are trained to ensure **personal safety and will give you instructions to follow. Don't forget to consult the IDEEV booklet for more details!**

## PERSONAL ASSISTANCE



### DEFIBRILLATORS

As of 01/09/2022, 1 defibrillator is available on the 1st floor in the central staircase. This defibrillator will eventually be installed on the ground floor of the IDEEV building in the lobby. 2 additional defibrillators will be installed: 1 in the greenhouse and 1 in the hangar.



### LITTLE INJURIES

Because we are all clumsy sometimes, boxes of bandages are available in the corridors! A first aid kit can be found in Emmanuelle Jestin's office (n° 2 016)

## REFUGE AREAS

**In the event of an alarm, you must EXIT!**

However, for people with reduced mobility, refuge areas are provided on the landings of the emergency staircases.

**Campus security central station: dial short code 19 or 01 69 15 79 99**